

# TeamMate<sup>®</sup>

## Roomware Solutions



TeamMate makes life simple: with a range of truly innovative furniture solutions to suit any application. Aesthetically pleasing, modular and practical, TeamMate products are designed to stand the test of time.

## Centra WallStand

MODEL: CENTRA

Built to be at the heart of the meeting room, Centra WallStand can elevate your VC & UC needs through contemporary style entwined with functionality.

### Features & Benefits

- >> Aesthetic & functional stand design
- >> Wall mounted or freestanding options
- >> Adjustable wall mounting
- >> 55"-98" Single Screen wall-mounting
- >> 55-86" Single Screen Freestanding
- >> Customisable interface panel for touch panels or
- >> Secure sliding panel in fabric finish (from Camira Blazer Lite Range)
- >> Compatible with the Mid-Atlantic cable tidy clips
- >> x2 2U rack guides option
- >> 1U rack board included
- >> Small form factor PC side aperture
- >> Efficient natural convection cooling system



### Overview

Built to be at the heart of the meeting room, this aesthetic looking screen stand can be modified depending on the size of screen and technology being used. The upper interface panel can be customised to fit a range of sound bars and control panels in an enclosed housing to ensure cable free installations.

The lower fabric panel can be removed to reveal a rack board for mounting small form factor equipment and a provision for PC. This panel is removable by sliding to reveal a lock and enables a secure yet functional design for your AV needs.

## Centra technical specifications

- >> 55-98" displays up to 90kg in weight
- >> Adjustable wall mounting plates
- >> Interface panel for sound bars or touch panels
- >> Removable perforated rack board
- >> Compatible with the Mid-Atlantic cable tidy clip
- >> Lower fabric panel in a range of Blazer Lite Fabric
- >> Black power-coat paint as standard

### Additional cost options:

- >> Non-standard fabric (>x3 unit qty)
- >> x2 2U 19" rack guides
- >> Addition power in front interface panel
- >> Additional internal rack mounted power
- >> Custom interface panel
- >> Sound-bar bracket

### Standard metalwork colours:



Black



White



Silver

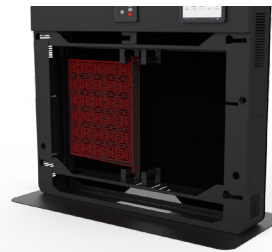


Custom  
RAL

### Added cost metalwork finishes:

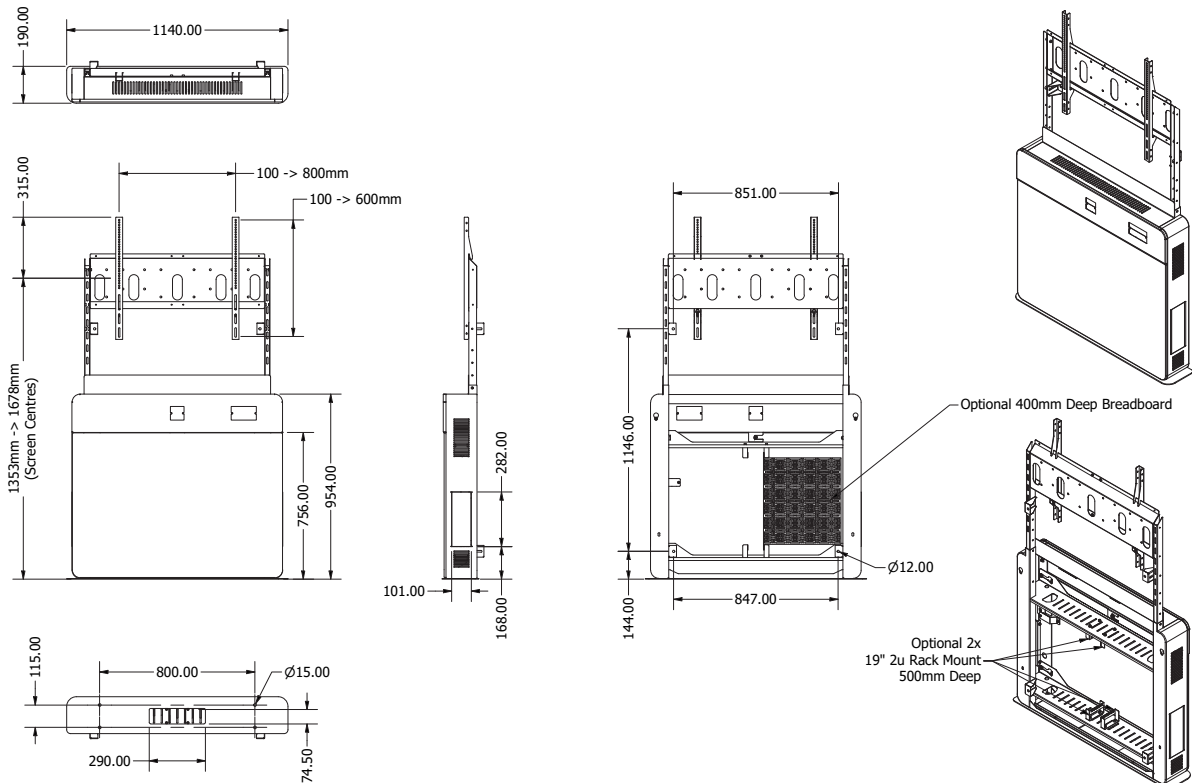


Module design, with PC access on side, customisable central module and removable fabric front panel



19" perforated rack board and 2U rack mounting guides

## CENTRA WALLSTAND TECHNICAL DRAWING



# TeamMate<sup>®</sup>

## Roomware Solutions



TeamMate makes life simple: with a range of truly innovative furniture solutions to suit any application. Aesthetically pleasing, modular and practical, TeamMate products are designed to stand the test of time.

## Centra Freestanding

MODEL: CENTRA

Built to be at the heart of the meeting room, Centra Freestanding can elevate your VC & UC needs through contemporary style entwined with functionality.

### Features & Benefits

- >> Aesthetic & functional stand design
- >> Freestanding design with option to fix to floor
- >> Fully cable managed
- >> Adjustable stanchions for larger screens
- >> 55-86" Single Screen Freestanding
- >> Customisable interface panel for touch panels or recessed sound-bar
- >> Secure sliding panel in fabric finish (from Camira Blazer Lite Range)
- >> Compatible with the Mid-Atlantic cable tidy clips
- >> x2 2U rack guides option
- >> 1U rack board option
- >> Small form factor PC side aperture
- >> Efficient natural convection cooling system



### Overview

Built to be at the heart of the meeting room, this aesthetic looking screen stand can be modified depending on the size of screen and technology being used. The upper interface panel can be customised to fit a range of sound bars and control panels in an enclosed housing to ensure cable free installations.

The lower fabric panel can be removed to reveal a rack board for mounting small form factor equipment and a provision for PC. This panel is removable by sliding to reveal a lock and enables a secure yet functional design for your AV needs.

## Centra technical specifications

- >> 55-86" displays up to 75kg in weight
- >> Adjustable wall mounting plates
- >> Interface panel for sound bars or touch panels
- >> Removable perforated rack board
- >> Compatible with the Mid-Atlantic cable tidy clip
- >> Lower fabric panel in a range of Blazer Lite Fabric
- >> Black power-coat paint as standard

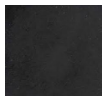
### Additional cost options:

- >> Non-standard fabric (>x3 unit qty)
- >> x2 2U 19" rack guides
- >> Addition power in front interface panel
- >> Additional internal rack mounted power
- >> Custom interface panel
- >> Sound-bar bracket

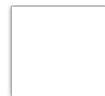


Module design, with PC access on side, customisable central module and removable fabric front panel

### Standard metalwork colours:



Black



White

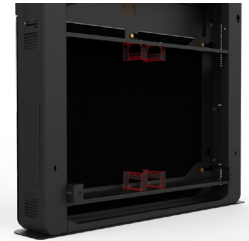
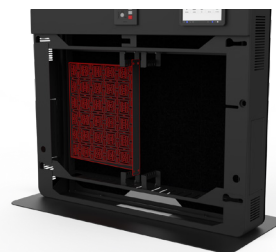


Silver



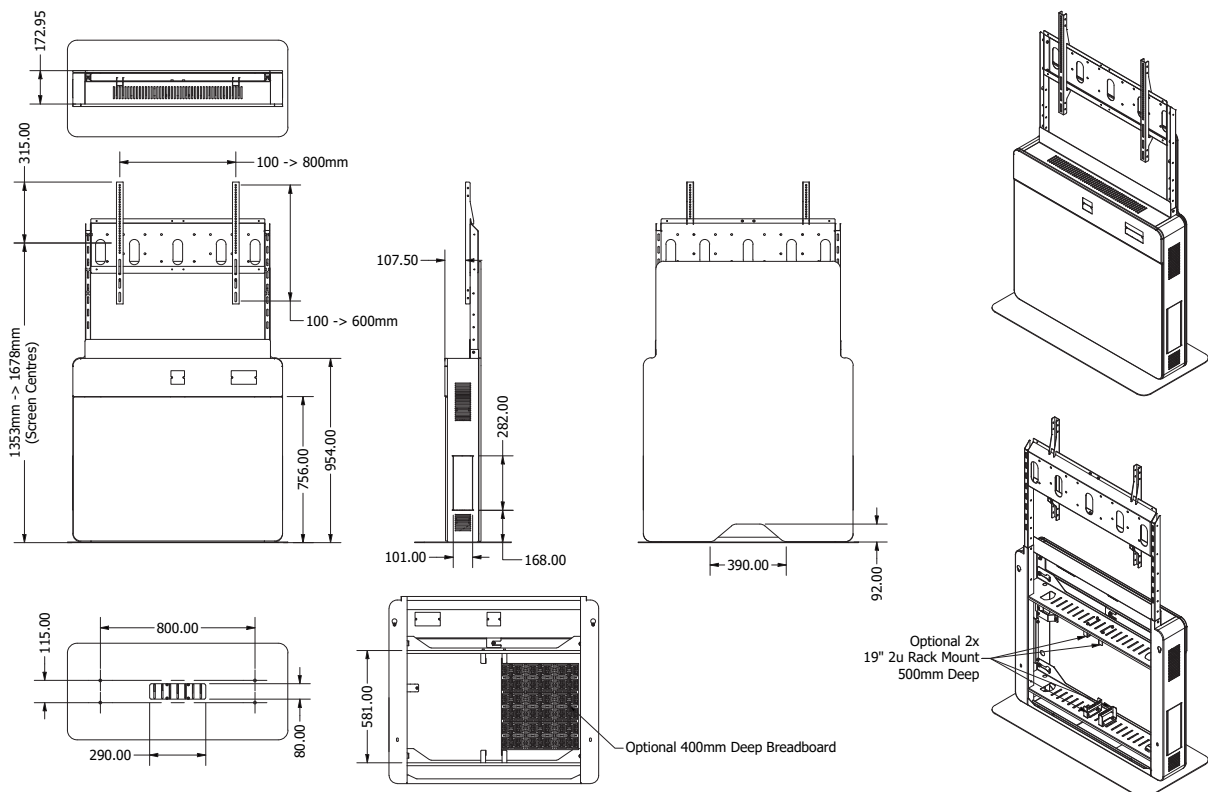
Custom  
RAL

### Added cost metalwork finishes:



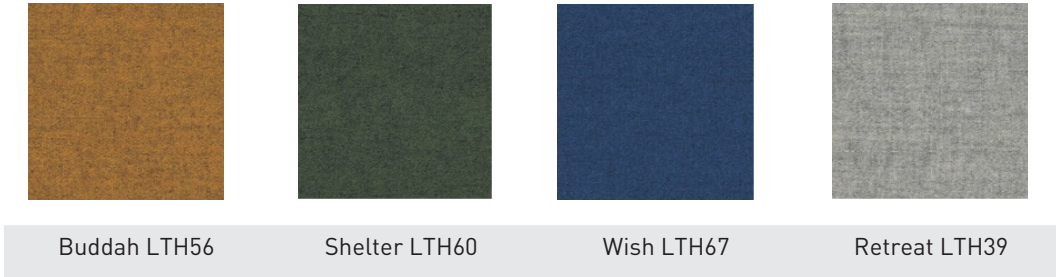
19" perforated rack board and 2U rack mounting guides

## CENTRA FREESTAND TECHNICAL DRAWING





### Centra Standard Colour Finishes:



### Centra Additional Cost Colour Finishes (>x3 qty):



Other fabrics are available but may incur additional costs. Please speak to TeamMate sales advisor.