

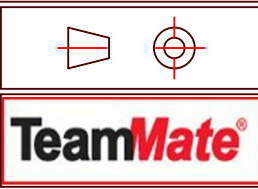
-	-	-	-
A	Issued for manufacture	27/02/20	N.Allen
Rev	Description	Date	Name

Notes:
General Tolerance ± 0.2
Angular Tolerance ± 0.5
Hole Position ± 0.2
Unless otherwise stated all dimensions are in millimetres
Remove all sharp edges to BS308: 1984 Parts 1,2 and 3.

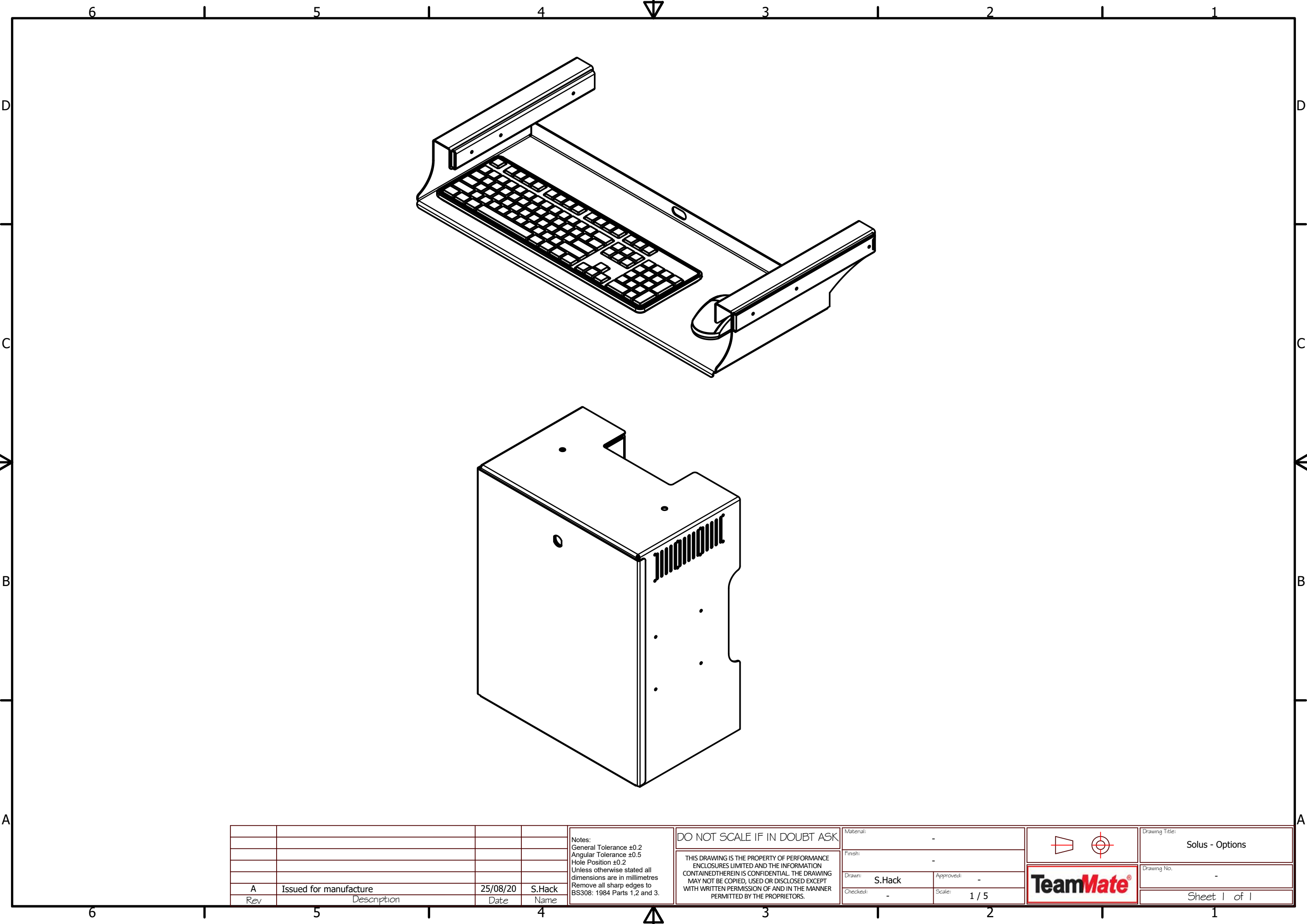
DO NOT SCALE IF IN DOUBT ASK

THIS DRAWING IS THE PROPERTY OF PERFORMANCE ENCLOSURES LIMITED AND THE INFORMATION CONTAINED HEREIN IS CONFIDENTIAL. THE DRAWING MAY NOT BE COPIED, USED OR DISCLOSED EXCEPT WITH WRITTEN PERMISSION OF AND IN THE MANNER PERMITTED BY THE PROPRIETORS.

Material:	-
Finish:	-
Drawn: N.Allen	Approved: -
Checked: -	Scale: 1/10



Drawing Title:	Solus - Premium
Drawing No.	-
Sheet	1 of 1




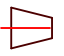
A	Issued for manufacture	25/08/20	S.Hack
Rev	Description	Date	Name

Notes:
General Tolerance ± 0.2
Angular Tolerance ± 0.5
Hole Position ± 0.2
Unless otherwise stated all dimensions are in millimetres
Remove all sharp edges to BS308: 1984 Parts 1,2 and 3.

DO NOT SCALE IF IN DOUBT ASK

THIS DRAWING IS THE PROPERTY OF PERFORMANCE ENCLOSURES LIMITED AND THE INFORMATION CONTAINED HEREIN IS CONFIDENTIAL. THE DRAWING MAY NOT BE COPIED, USED OR DISCLOSED EXCEPT WITH WRITTEN PERMISSION OF AND IN THE MANNER PERMITTED BY THE PROPRIETORS.

Material: -	
Finish: -	
Drawn: S.Hack	Approved: -
Checked: -	Scale: 1 / 5



TeamMate[®]

Drawing Title: Solus - Options
Drawing No. -
Sheet 1 of 1