

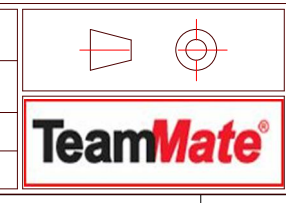
Rev	Description	Date	Name
B	Added 90mm option	01/11/21	S.Hack
A	Issued for manufacture	15/03/21	S.Hack

Notes:
 General Tolerance ± 0.2
 Angular Tolerance ± 0.5
 Hole Position ± 0.2
 Unless otherwise stated all dimensions are in millimetres
 Remove all sharp edges to BS308: 1984 Parts 1, 2 and 3.

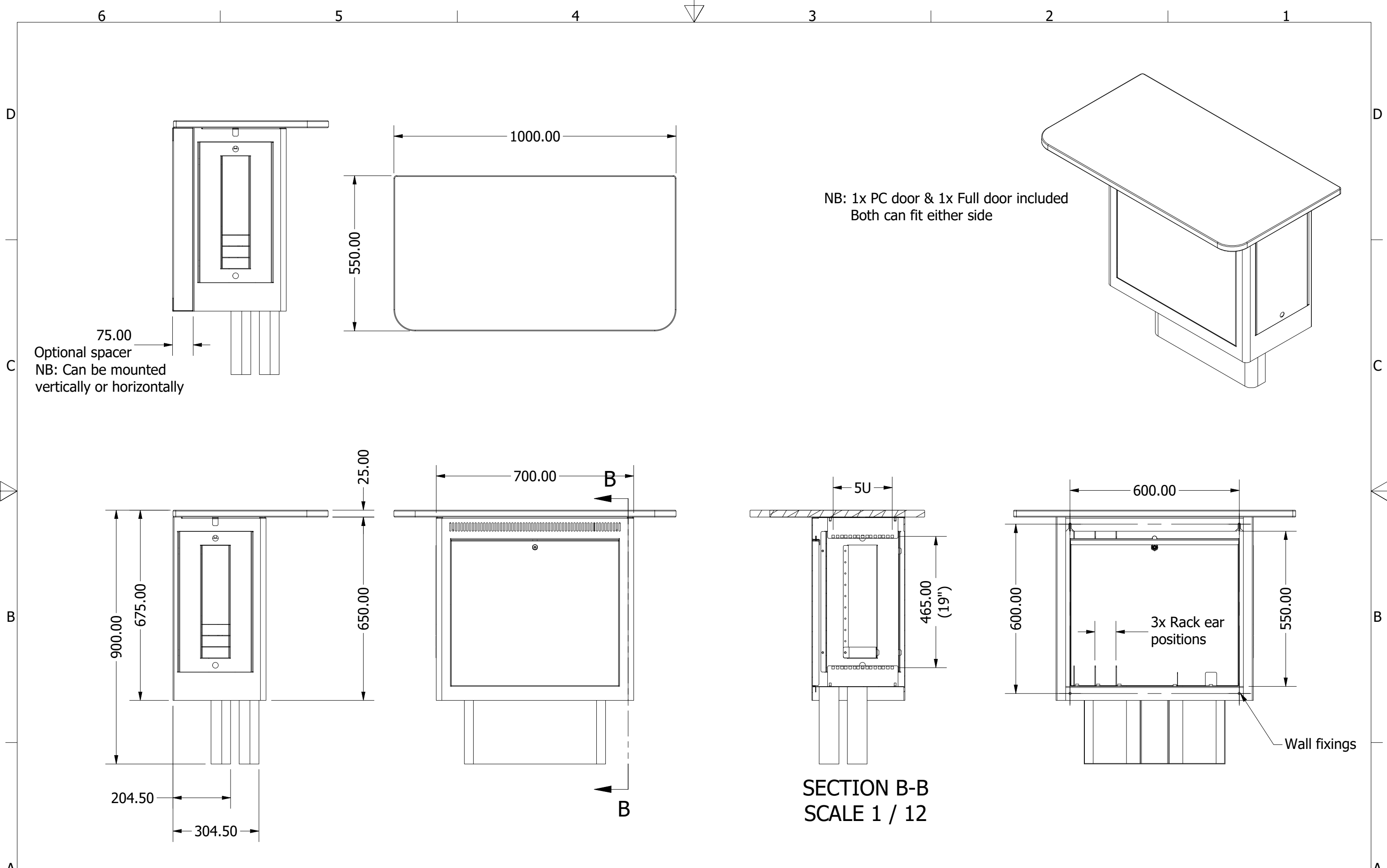
DO NOT SCALE IF IN DOUBT ASK

THIS DRAWING IS THE PROPERTY OF PERFORMANCE ENCLOSURES LIMITED AND THE INFORMATION CONTAINED HEREIN IS CONFIDENTIAL. THE DRAWING MAY NOT BE COPIED, USED OR DISCLOSED EXCEPT WITH WRITTEN PERMISSION OF AND IN THE MANNER PERMITTED BY THE PROPRIETORS.

Material:	-
Finish:	-
Drawn:	S.Hack
Checked:	-
Approved:	-
Scale:	1 / 12



Drawing Title:	WallHub 2
Drawing No.:	B
Sheet 1 of 2	



NB: 1x PC door & 1x Full door included
Both can fit either side

75.00
Optional spacer
NB: Can be mounted
vertically or horizontally

SECTION B-B
SCALE 1 / 12

				Notes: General Tolerance ± 0.2 Angular Tolerance ± 0.5 Hole Position ± 0.2 Unless otherwise stated all dimensions are in millimetres Remove all sharp edges to BS308: 1984 Parts 1,2 and 3.	DO NOT SCALE IF IN DOUBT ASK	Material: -			Drawing Title: WallHub 2	
					THIS DRAWING IS THE PROPERTY OF PERFORMANCE ENCLOSURES LIMITED AND THE INFORMATION CONTAINED THEREIN IS CONFIDENTIAL. THE DRAWING MAY NOT BE COPIED, USED OR DISCLOSED EXCEPT WITH WRITTEN PERMISSION OF AND IN THE MANNER PERMITTED BY THE PROPRIETORS.	Finish: -			Drawing No.: B	
						Drawn: S.Hack	Approved: -			
						Checked: -	Scale: 1 / 12			
Rev	Description	Date	Name							Sheet 2 of 2