

# TeamMate<sup>®</sup> Technical Furniture Solutions

TeamMate makes life simple: with a range of truly innovative furniture solutions to suit any application. Aesthetically pleasing, modular and practical, TeamMate products are designed to stand the test of time.

## Totem AV Stand - Back to back

MODEL: TOTEMBACKTOBACK

Floor mounted dual screen self-contained AV & IT station to support a variety of digital signage screens.

### Features & Benefits

- >> Supports screen sizes from 55" - 70"
- >> Floor mounted self contained station for AV & IT equipment
- >> Cable management channels
- >> Access equipment via secure lockable doors
- >> Provision for Tower/compact PC (left or right handed)
- >> Comes with security bars and blanking plates for access to PC (if required)
- >> Provision for customisable AV control panel/ input plate apertures
- >> Modular construction (bespoke modules can be added: e.g laptop storage)
- >> Screen can be set at required height
- >> Can be used with TeamMate WorksZone Tables or other standard tables
- >> Natural convection cooling design
- >> Standard finished in white powdercoat



### Overview

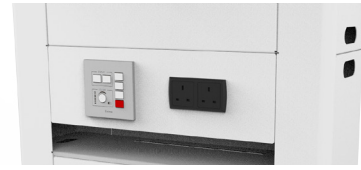
TeamMate Totem AV Stand - Back to back, is a floor mounted dual screen digital signage solution that supports integrated AV & IT equipment.

With a modular construction, the Totem provides options for keyboard stowage or a range of integrated audio visual equipment, including cut outs for AV control panels, input plate and power outlets. PC storage is provided on the left and right hand side of the Totem.

Ergonomically designed; the Totem AV Stand- Back to back enables multiple viewing angles of the dual screens and can ideal for creating flexible spaces.

## Totem AV Stand technical specifications:

- >> VESA mounting pattern: 300x200mm - 800x600mm
- >> Supports screen sizes from 55" - 70" and up to 30kg (each screen)
- >> 3U 19" rack guides to vertically mount equipment
- >> Cable management path to upper equipment compartments
- >> PC aperture blanking plates and PC securing strips included
- >> Optional custom interface panel for control panels, power and input plates
- >> Optional storage shelf module



Custom interface panel with cut out for control panel/  
power/input plate

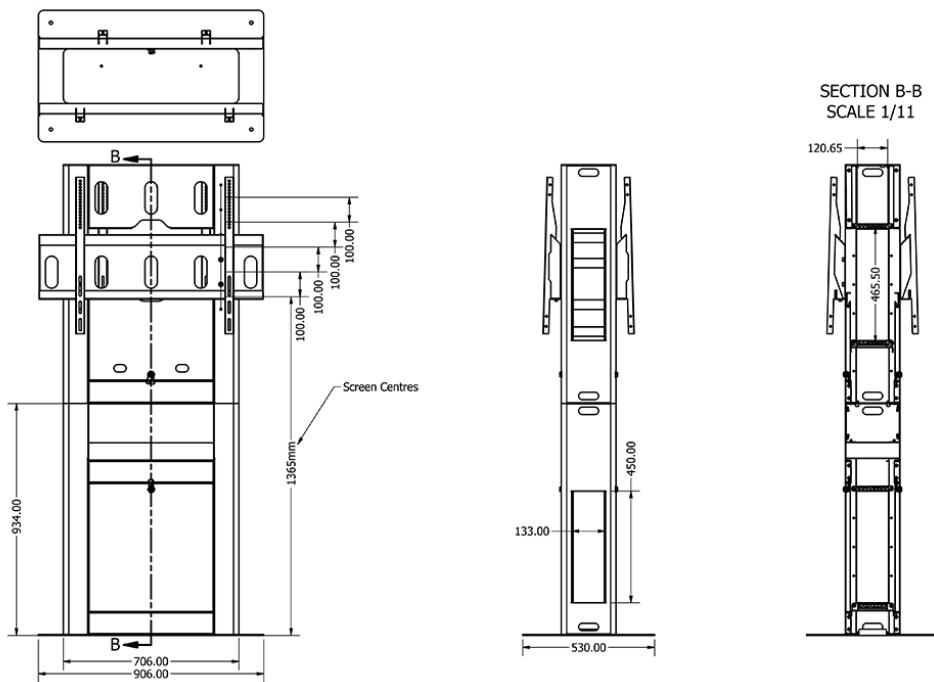
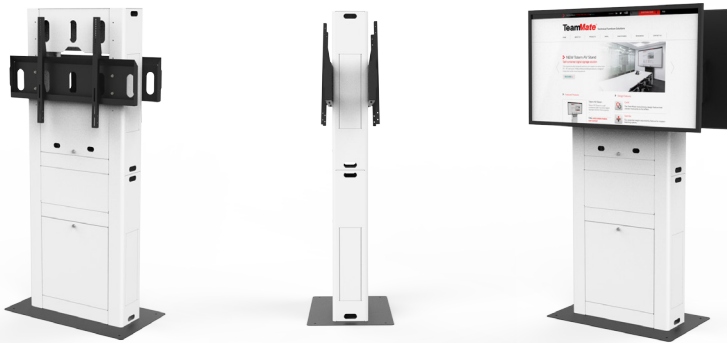


Optional storage shelf



Compact or tower pc compatible

Floor fixings not included



### Headquarters

#### TeamMate

EMEA  
7 Rockfort Industrial Estate  
Hithercroft Road  
Wallingford, Oxfordshire  
OX10 9DA  
United Kingdom

T: +44 (0) 1491 825739  
F: +44 (0) 1491 838568  
E: info@teammateworld.com  
W: www.teammateworld.com

Date of issue Jan 2018 v1.1  
These specifications are subject to change.  
E&OE.

TeamMate is a registered trademark of  
Performance Enclosures Ltd.